

dr1

display replicator & dmx recorder

SPECIFICATIONS

- Display replicator, all the functions of the units connected to dr1 can be remotely controlled via DMX
- Sensor test PCB for light, temperature and movement sensors (optional)
- DMX recorder and back up (max 96 DMX channels)
- 5 programs of 15 memories each can be transferred in dr1 memory
- AutoPlay setting, this function allows programs previously selected to be run at switch on

PHYSICAL SIZE

- Length: 90 mm (3.5 in)
- Width: 190 mm (7.4 in)
- Height: 50 mm (1.9 in)
- Weight: 0.6 kg (1.3 lbs)

CONTROL PROTOCOL AND PROGRAMMING

- USITT DMX512/1990
- Setting and addressing: led display

ELECTRICAL SPECIFICATIONS/CONNECTIONS

- AC power: 100/240 V, 50/60 Hz
- DMX data in/out: 5 pin locking XLR

OPTIONS

- Dr1 Test sensor PCB (#9704)
- Power supply 100/240 V +15 V DC, 15 W (#644/4)
- Software upgrade kit, only for version prior to 2.3 (#kit98)



dr1 - # 9703

dr2

display replicator for flex range



dr2 - # 9706

SPECIFICATIONS

- Display replicator, all the functions of the flex range units connected to dr2 can be remotely controlled via DMX
- Software update flex units through dmx connection
- PC connection via USB port

PHYSICAL SIZE

- Length: 200 mm (7.9 in)
- Width: 200 mm (7.9 in)
- Height: 70 mm (2.7 in)
- Weight: 1.3 kg (2.9 lbs)

CONTROL PROTOCOL AND PROGRAMMING

- USITT DMX512/1990
- Setting and addressing: LCD display

ELECTRICAL SPECIFICATIONS/CONNECTIONS

- AC power: 100/240 V, 50/60 Hz
- DMX data in/out: 5 pin locking XLR

OPTIONS

- Display battery pack (#678)



Bld.O.S.

bidirectional opto splitter

SPECIFICATIONS

- Amplifier/opto isolator, it can manage one or two DMX nets
- Led indicator to test the correct functioning of the in/out DMX lines

PHYSICAL SIZE

- Length, rack version: 137 mm (5.4 in)
- Length, truss version: 165 mm (6.5 in)
- Width, rack version: 367 mm (14.4 in)
- Width, truss version: 485 mm (19.1 in)
- Height: 44 mm (1.73 in)
- Weight, rack version: 2.5 kg (5.5 lbs)
- Weight, truss version: 2.8 kg (6.2 lbs)

CONTROL PROTOCOL AND PROGRAMMING

- Protocol: USITT DMX512/1990
- Setting and addressing: binary dip switch

ELECTRICAL SPECIFICATIONS/CONNECTIONS

- AC power: 100/240 V, 50/60 Hz
- DMX data in/out: 5 pin locking XLR



Bld.O.S. truss - # 661
Bld.O.S. rack - # 660



DIGifactor



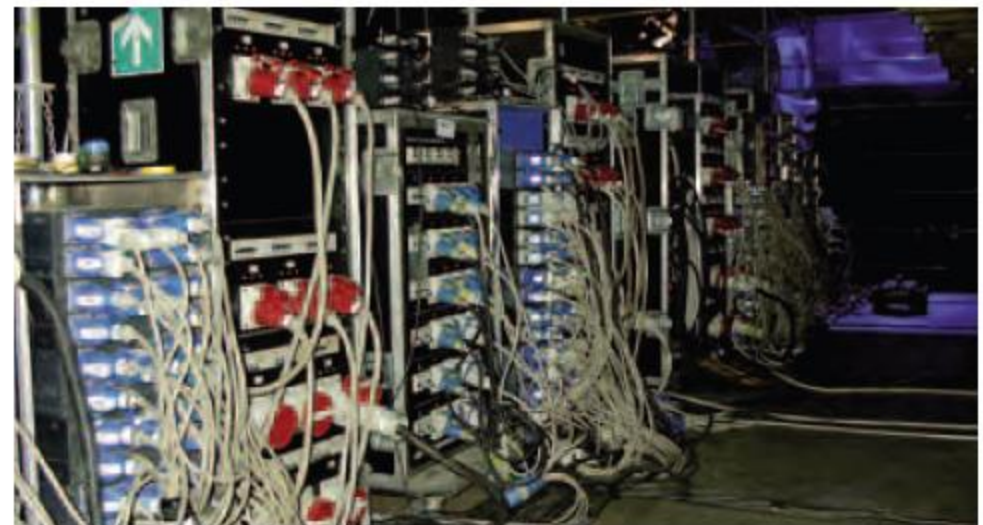
- DIGifactor Club 6 Ch - # 6012**
200/240V 50/60HZ
- DIGifactor Club 6 Ch - # 6012/1**
100/120V 50/60HZ
- DIGifactor 12 Ch - # 6006**
- DIGifactor 12 Ch CEE - # 6013**
- DIGifactor 6 Ch (5 Kw) - # 6010**

SPECIFICATIONS

- Power output
6 Ch x 2,3 Kw, 10A (DIGifactor Club)
12 Ch x 2,3 Kw, 10A (DIGifactor 12 ch and 12ch CEE)
6 Ch x 5 Kw, 22A (DIGifactor 6 ch x 5 Kw)

PHYSICAL SIZE

- Length: 488 mm (19.0 in)
- Width: 322 mm (12.0 in)
- Height, DIGifactor Club: 98 mm (3.8 in)
- Height, DIGifactor 12 ch: 220 mm (8.0 in)
- Height, DIGifactor 12ch CEE: 352 mm (13.0 in)
- Height, DIGifactor 6 ch x 5 Kw: 308 mm (12.0 in)



- Weight, DIGifactor Club: 7.5 kg (16.5 lbs)
- Weight, DIGifactor 12 ch: 12 kg (26.4 lbs)
- Weight, DIGifactor 12ch CEE: 20 kg (44.1 lbs)
- Weight, DIGifactor 6 ch x 5 Kw: 17 kg (37.5 lbs)

CONTROL PROTOCOL AND PROGRAMMING

- USITT DMX512/1990
- Setting and addressing: led display

ELECTRICAL SPECIFICATIONS/CONNECTIONS

- AC power: 200/240 V, 50/60 Hz,
100/120 V, 50/60 Hz (only DIGifactor Club)
- DMX data in/out: 5 pin locking XLR