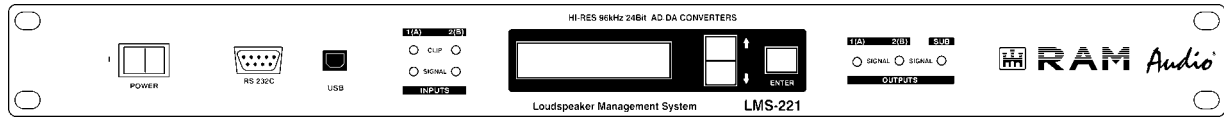


# LMS 221



## Loudspeaker Management System



### Features

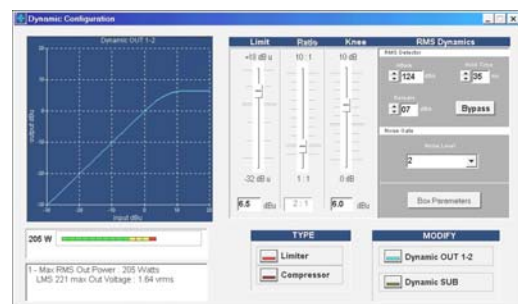
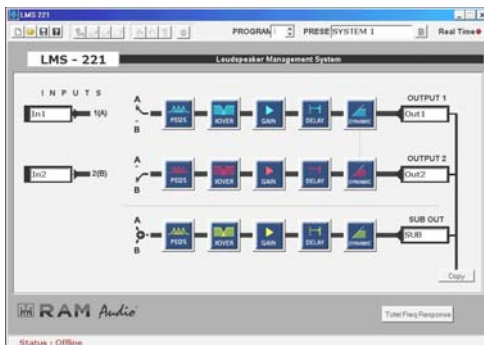
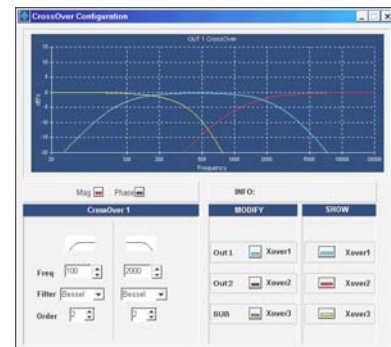
- Two Inputs and Two+One Mono Outputs: configurable as two way stereo with mono sub output.
- Real Time function.
- 24 bits/96 kHz 256x Oversampling A/D Converter.
- 24 bits/48 kHz 256x Oversampling D/A Converter.
- 48 bits floating point DSP.
- Overload input monitoring.
- 60 Presets Memory.
- RS232 and USB computer connection.

### Output Configuration

- Free Routing.
- Output Delay: 0 to 1.7 meters (5ms).
- Crossovers: Up to 4th Order (24dB/Oct). Butterworth, Linkwitz-Riley and Bessel.
- EQ: 7 full configuration filters (Parametric, Shelving, LowPass, HiPass, BandPass, StopBand, AllPass).
- Gain, Mute and Phase inversion.
- Compressor / Limiter with adjustable knee.
- Noise Gate.
- Possibility to use the acoustic system parameters, magnitude and phase, and refer to the system's Total Electro-acoustic response so that "you hear what you see".

### Technical Data

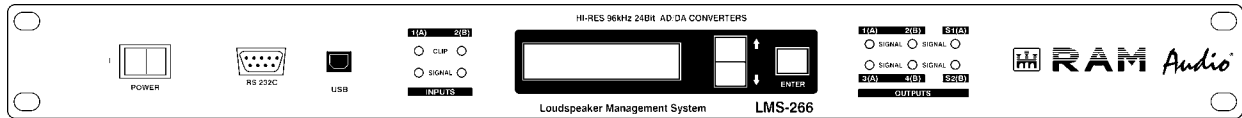
- Input Impedance: 32 kOhm Balanced
- Output Impedance: 50 Ohm Balanced
- Max. Input/Output Level: +15/18dBu
- Dynamic Range: 105 dB
- THD: <0.002%
- Crosstalk: -120 dB
- Storing Memories: 60
- Switching Power Supply: Universal 85V-265V AC, 50-60 Hz



# LMS 266



## Loudspeaker Management System



### Features

- Two Inputs and Six Outputs: configurable as three way stereo.
- Real Time function.
- 24 bits/96 kHz 256x Oversampling A/D Converter.
- 24 bits/48 kHz 256x Oversampling D/A Converter.
- 48 bits floating point DSP.
- Overload input monitoring.
- 60 Presets Memory.
- RS232 and USB computer interface.

### Output Configuration

- Free Routing.
- Output Delay: 0 to 1.7 meters (5ms).
- Crossovers: Up to 4th Order (24dB/Oct). Butterworth, Linkwitz-Riley and Bessel.
- EQ: 7 full configuration filters (Parametric, Shelving, LowPass, HiPass, BandPass, StopBand, AllPass).
- Gain, Mute and Phase inversion.
- Compressor / Limiter with adjustable knee.
- Noise Gate.
- Possibility to use the acoustic system parameters, magnitude and phase, and refer to the system's Total Electro-acoustic response so that "you hear what you see".

### Technical Data

- Input Impedance: 32 kOhm Balanced
- Output Impedance: 50 Ohm Balanced
- Max. Input/Output Level: +15/18dBu
- Dynamic Range: 105 dB
- THD: <0.002%
- Crosstalk: -120 dB
- Storing Memories: 60
- Switching Power Supply: Universal 85V-265V AC, 50-60 Hz

