



## BANDEJA RACK 2U

## RACK SHELF 2U

REF: 82

## DESCRIPCIÓN:

- Bandeja para sujeción de equipos. Hasta 20 kilos.
- Fondo 400 mm

## DESCRIPTION:

- Shelf to hold equipment. Until 20 kilos.
- Depth 400 mm



## BANDEJA RACK 3U

## RACK SHELF 3U

REF: 84

## DESCRIPCIÓN:

- Bandeja para sujeción de equipos. Hasta 20 kilos.
- Fondo 400 mm

## DESCRIPTION:

- Shelf to hold equipment. Until 20 kilos.
- Depth 400 mm

LATERALES PARA PANEL  
(PROFUNDIDAD)LATERALS FOR PANEL  
(DEPTH)

REF: LAT-NE (NEGRO / BLACK)

REF: LAT-BE (BEIGE)

## DESCRIPCIÓN:

- Con estos laterales, los paneles quedan insertados 245 mm (máx) dentro del rack.
- Los paneles que van entre estos laterales, se fabrican a medida.

## DESCRIPTION:

- With this laterals, the panels get inserted 245 mm (max.) into the Rack.
- The panels between this laterals, are customized.

- With this panels, not only you can cover empty spaces, but due to their strongness, they are good to hold equipments.

- Con estos paneles no solo se consigue tapar huecos, ya que su estructura robusta, los hace ideales también para sujetar equipos.

**BLANK PANEL 1U (1/2 RU)**

REF: 418 (NEGRO / BLACK)

REF: 417 (BEIGE)

**PANEL NEUTRO 1U (1/2 RU)****BLANK PANEL 2U (1/2 RU)**

REF: 420 (NEGRO / BLACK)

REF: 419 (BEIGE)

**PANEL NEUTRO 2U (1/2 RU)****BLANK PANEL 1U**

REF: 438 (NEGRO / BLACK)

REF: 437 (BEIGE)

**PANEL NEUTRO 1U****BLANK PANEL 2U**

REF: 439 (NEGRO / BLACK)

REF: 440 (BEIGE)

**PANEL NEUTRO 2U****BLANK PANEL 3U**

REF: 642 (NEGRO / BLACK)

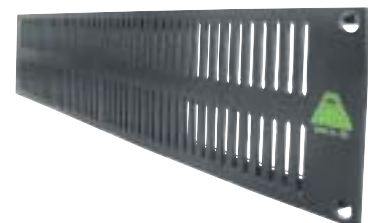
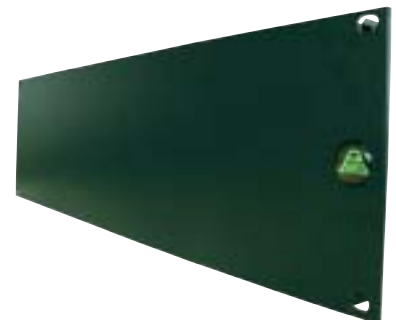
REF: 627 (BEIGE)

**PANEL NEUTRO 3U****VENTILATION PANEL 1U**

REF: 459 (NEGRO / BLACK)

**PANEL VENTILACIÓN 1U****VENTILATION PANEL 2U**

REF: 461 (NEGRO / BLACK)

**PANEL VENTILACIÓN 2U**



## PERFIL RACK

## RACK FRAME

REF: 480

## DESCRIPCION:

- Perfil con taladros standard para sujecion de paneles.

**MEDIDAS (An x Al x F)**  
22 X 2000 X 39 mm

## DESCRIPTION:

- Frame with standard drills to hold panels.

**DIMMENSION (W x H x D)**  
22 X 2000 X 39 mm



## SET PARA ENRACKAR PANELES

## RACK SET FOR PANEL SCREWING

REF: 588

## DESCRIPCION:

- Tuerca enjaulada  
- Arandela plástico para proteccion de panel.  
- Tornillo M-8. Color Negro

## DESCRIPTION:

- Cage nut  
- Panel protection plastic washer.  
- Screw M-8. Black colour



## PANEL PERCHA

## PATCH CORD HANGER

## DESCRIPCION:

- Panel para colgar patch cords.  
- Para enrackar o para fijar en pared

**27 espacios para varios Patch cords 4,5 mm (Max.)**

## DESCRIPTION:

- Panel to hang Patch cords  
- To rack or to screw on walls.

**27 Spaces for several Patch cords 4,5 mm (Max.)**

REF: 2589 ( FIJAR / SCREW )

REF: PT10013 ( RACK )

**19 espacios para varios Patch cords 5,5 mm (Max.)**

**19 Spaces for several Patch cords 5,5 mm (Max.)**

REF: 2591 ( FIJAR / SCREW )

REF: PT11159 ( RACK )

**13 + 10 espacios para varios Patch cords 4,5 y 5,5 mm (Max.)**

**13 + 10 Spaces for several Patch cords 4,5 & 5,5 mm (Max.)**

REF: 2590 ( FIJAR / SCREW )

REF: PT11160 ( RACK )

## PANEL CEPILLO

## BRUSH PANEL

REF: PT3026

## DESCRIPCION:

- Para orientar y peinar cables hacia el frontal del rack.

## DESCRIPTION:

- To guide and brush cables to the front rack.

